

BALANCING ELECTRICITY supply AND demand

dmremc.com

CONTACT US

Toll Free: 800-762-7362

OFFICE HOURS

7:30 a.m.–4 p.m., Monday–Friday

STREET ADDRESS

12628 E. 75 N, Loogootee, IN 47553

MAILING ADDRESS

P.O. Box 430, Loogootee, IN 47553

SERVICE INTERRUPTIONS

To report an outage or emergency, call
812-295-4200 or 800-762-7362 day or night.

BOARD OF DIRECTORS

Brandt Schuckman, *President*

Joshua Dove, *Vice President*

John Edwards, *Secretary*

Terry Chapman, *Treasurer*

August Bauer

Amy Burris

Travis Summers

MONTHLY MEETING

Tuesday, Jan. 28, 7 p.m.

Daviness-Martin County REMC office

BILL PAYMENT OPTIONS

SmartHub — online bill payment system

Budget billing

Auto bank draft

Drive-thru window

Night depository

Credit card payment (VISA,

Discover and MasterCard accepted)

Pay-by-phone: 855-951-3760

MISSION STATEMENT

“Our mission is to provide safe, reliable
electricity and quality services for our
members at a reasonable cost.”



LIKE US ON FACEBOOK

[www.facebook.com/
davinessmartincountyremc](http://www.facebook.com/davinessmartincountyremc)

Electricity is essential for nearly every aspect of daily life — so essential that we rarely think about how it’s produced and delivered to our homes. You might be surprised to learn that behind the scenes, a network of experts is working daily (and even by the minute) to anticipate how much electricity you need before you even use it.

We’re all connected to the electric grid, so ensuring the right amount of electricity for all involves a complex process of forecasting energy demand, planning for capacity, and securing enough supply to meet Americans’ needs.

POWERFUL SOURCES

First, electricity must be generated at a power plant using either traditional sources, such as coal, natural gas, or nuclear energy, or renewable sources, such as solar, wind, or hydropower.

At Daviness-Martin County REMC, we work closely with Hoosier Energy, our local wholesale power partner, to secure enough electricity for our communities. We use a diverse mix of energy sources to generate the power we deliver to your home or business. By maintaining a diverse energy mix — coal, gas, and nuclear — Daviness-Martin County REMC has options to ensure reliable power at a competitive cost.

On a larger scale, across the country, electricity supply and demand are managed through a market that includes long-term planning

agreements, where electricity is bought and sold, just like other common goods and services. Because Daviness-Martin County REMC works with our wholesale power partner, which is also a cooperative, we can pool resources and expertise to deliver affordable power to our local communities.

Electricity supply changes throughout the day because demand fluctuates based on consumers’ needs. For example, Daviness-Martin County REMC knows that we need to ensure more electricity in the mornings when you start your day and in the evenings when you cook dinner, run appliances, and watch TV. Demand also increases when weather patterns change, such as extremely warm or cold temperatures.

MANAGING SUPPLY AND DEMAND ACROSS THE GRID

Other electric utilities across the country are managing the same task of balancing supply and demand, which is why we have a larger network of key players in place to ensure enough power is delivered across the grid.

In most cases, the amount of electricity generated and how much is sent to specific areas are coordinated and monitored by regional transmission organizations (RTOs) and independent system operators (ISOs). In other areas, individual electric utilities perform these tasks.

CONTINUED ON PAGE 6

co-op news

CONTINUED FROM PAGE 5

RTOs, ISOs, and electric utilities act as air traffic controllers for the electric grid. They forecast when you, your neighbors, and communities across a large region will need more power. These organizations take measured steps to ensure there's enough supply to meet demand.

LOOKING AHEAD

As the energy sector undergoes rapid change, it's important for all consumers to understand the basics of electricity supply and demand.

Electricity use in the U.S. is expected to rise to record highs this year and next, with the demand expected to at least double by 2050. At the same time, energy policies are pushing the early retirement of always-available generation sources, which will compromise reliable electricity.

Daviess-Martin County REMC remains committed to providing affordable, reliable energy to the members we serve. That's why we are preparing now for increased demand and other challenges that could compromise our local electric supply.

Managing the balancing act of electricity supply and demand is a complex job, which is why we have a network of utilities, power plant operators, and energy traffic managers in place to direct the electricity we need and keep the electric grid balanced.

RYAN DANT
Chief Executive
Officer



Pictured left to right: Front row, Carey Wade, Sr. billing, MSR, and key accounts coordinator, DMREMC; Erica Worland, director of finance and accounting, DMREMC; back row, John Hefferman, E/I department superintendent, GPC; Jason Fry, production manager, GPC; Shannon Dalton, plant manager, GPC; and Ryan Dant, CEO, DMREMC

Cooperative Power Management Program

Grain Processing Corporation (GPC) was recently presented a check from Daviess-Martin County REMC for being a Load Modifying Resource (LMR) in Hoosier Energy's Cooperative Power Management Program.

The Cooperative Power Management Program, which began on June 1, 2024, aims to reduce electrical energy demand during grid emergencies. LMRs are emergency resources deployed during critical times when electricity demand exceeds available generation. This is the last measure before firm load shed (rolling blackout) is needed.

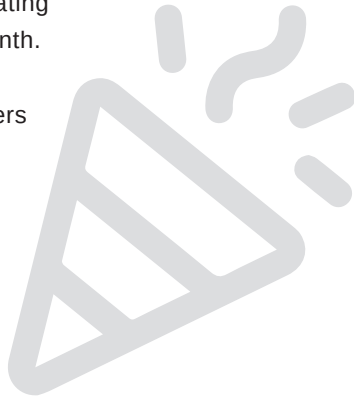
By signing up as an LMR, GPC has agreed to reduce its electrical

load demand for four consecutive hours through load reduction, load shifting, or onsite generation when the Midcontinent Independent System Operator (MISO) deploys LMRs.

GPC, a member of the KENT® Corporation family of companies, is Daviess-Martin County REMC's largest member-consumer. The family company manufactures high-quality ingredients from corn, chickpeas, and soybeans for global markets such as food, beverage, industrial, agriculture, and pet care. By joining the Cooperative Power Management Program, GPC is taking the next step in protecting the reliability of the electric grid.

EMPLOYEE ANNIVERSARIES

The following employees are celebrating an anniversary at DMREMC this month. We thank them for their continued commitment to providing our members with the best service possible.



BECCA HOLLAWAY
JAN. 4
3 YEARS



THERESA SHOWALTER
JAN. 5
38 YEARS



TYLER BOSTOCK
JAN. 8
7 YEARS



ERICA WORLAND
JAN. 17
3 YEARS



CAREY WADE
JAN. 31
3 YEARS

2025 REBATES

New year, same opportunities to save! Daviess-Martin County REMC offers a variety of rebates to our members. Keep us in mind when you purchase a new water heater, geothermal heat pump, ductless mini-split, dual fuel heat pump, or electric lawn equipment. We also offer a rebate on HVAC tune-ups.

Visit dmremc.com under the "Ways to Save" tab to learn more about our available rebates offered all year.



YOUR CHANCE TO WIN \$50!

In each issue of the magazine, Daviess-Martin County REMC asks our readers three questions. The answers can be found in the articles of Indiana Connection. Clip the coupon below along the dotted line. Fill it out and return it to our office with your monthly payment before the 20th of the month. (Delinquent members are not eligible.)

Each month, a winner will be drawn from the entries submitted. Make sure you bring or mail in your most recent coupon as the coupons are dated monthly. Copies will not be accepted, and coupons are not available at the office! Winners will be notified and their names will be published in a subsequent issue of Indiana Connection.

OCTOBER WINNER:
George Peel from Washington

For bills dated the 5th of the month and paid by the 20th.

1. We work closely with _____, our local wholesale power partner, to secure enough electricity for our communities, using a diverse mix of energy sources to generate the power we deliver to your home or business.
2. Nominations for members to become a director on the REMC Board shall be made by petition. Petitions must be submitted to the REMC no later than Friday, Feb. ____, 2025.
3. The deadline to claim capital credits is _____.

NAME: _____

ADDRESS: _____

ACCOUNT NO.: _____

PHONE NO.: _____

I would like to round my monthly bill up to the next whole dollar for Operation Round Up.

I am already signed up for Operation Round Up.



2025 youth programs

Cooperative Calendar of Student Art

ARTWORK SUBMISSION DEADLINE: Feb. 28

Camp Kilowatt

June 4-7

Daviess-Martin County REMC will sponsor five current sixth-grade students. Visit dmremc.com/camp-kilowatt to learn more.

DEADLINE TO APPLY: March 3

Indiana Youth Tour to Washington, D.C.

June 15-22

Daviess-Martin County REMC will sponsor two current high school students. Visit dmremc.com/Indiana-youth-tour to learn more.

DEADLINE TO APPLY: March 3

DAVIESS-MARTIN REMC ANNUAL MEETING AND DIRECTOR NOMINATION PROCESS

The 2025 Daviess-Martin County REMC Annual Meeting has been set for Tuesday, April 22, 2025. This meeting will be live-streamed from the Daviess-Martin County REMC office. The recorded meeting will also be posted to the REMC Facebook page.

Business meeting action Items will include:

- The election of two directors for the Cooperative to serve a term of three years. Districts up for election include District 1 (Elmore, Madison, Steele, and Bogard townships in Daviess County) and District 4 (Harrison and Reeve townships in Daviess County).
- Approval of reports for the previous fiscal year.
- Transacting such other business as may come before the meeting.

In accordance with DMREMC bylaws, nominations for members to become a director on the REMC Board shall be made by petition. Valid nominating petitions must be submitted to the REMC no later than Friday, Feb. 21, 2025. Interested parties should contact the REMC office during regular business hours, Monday through Friday, 7:30 a.m. to 4 p.m., for petition details and to request an informational packet.

Claim your capital credits

Davies–Martin County REMC employees and their families joined in on the Christmas season fun by driving in the Washington and Loogootee parades.



Daviess–Martin County REMC is attempting to locate former and current members who have unclaimed capital credits. Anyone who was a member from 1993 through 1995 may have a capital credit waiting for them to claim.

A list of eligible individuals was published on our website on Dec. 13, 2024, and will be available for review until Feb. 13, 2025. Head to dmremc.com, scroll down to “Unclaimed Capital Credits,” and click “View List” to review the list of names you may know. On our homepage, you will also find the appropriate forms needed to claim your capital credits. If you are an heir of a past member who we still have an unclaimed capital credit for, you will also find the proper forms here.

The deadline to claim these credits is Feb. 13. After this date, the credit amount will be treated as donated cash and will no longer be eligible to claim.